



**Nikhil Aggarwal & Kuntal Aggarwal**

**RESAIKI**  
Interiors & Architecture

**Head Office:**

No. 1B-072, GC Grand, Plot No. 2 C Vaibhav  
Khand, Indirapuram, Ghaziabad,  
Uttar Pradesh - 201014.  
Web Site : [www.resaikiinteriors.in](http://www.resaikiinteriors.in)

## **“Mr.Singla’s Residence”**

Resaiki is the place where your dreams of wonderful Interiors and Architecture can come true with magnificence. A completely new world full of elegance and sophistication is waiting for you and we are here with dedicated services to convert your space into a dream home or office. We have a team of experts who are well versed with the required design skills with which they convert your homes or offices into beautiful spaces. We also offer Interior Design Consultancy Services for corporate, hospitality, office and retail industry.

Our team will give you a home or office, which reflects your personality, taste and lifestyle. We believe in building spaces with love and affection that welcome people with the same warmth.





The lines, colours and materials opulent interior style re-interpreted into this contemporary home.

From all the little design details that make up this residential project by Resaiki Interiors, founded by Kuntal Vyas Aggarwal and Nikhil Aggarwal, it's the material pallet that stands out of the most. It was the most challenging aspect of the project, as it was meant to meet the socialite client's brief of including certain elements to make their space dynamic and welcoming. All the rooms have a unique colour pallet giving an identity of its own.





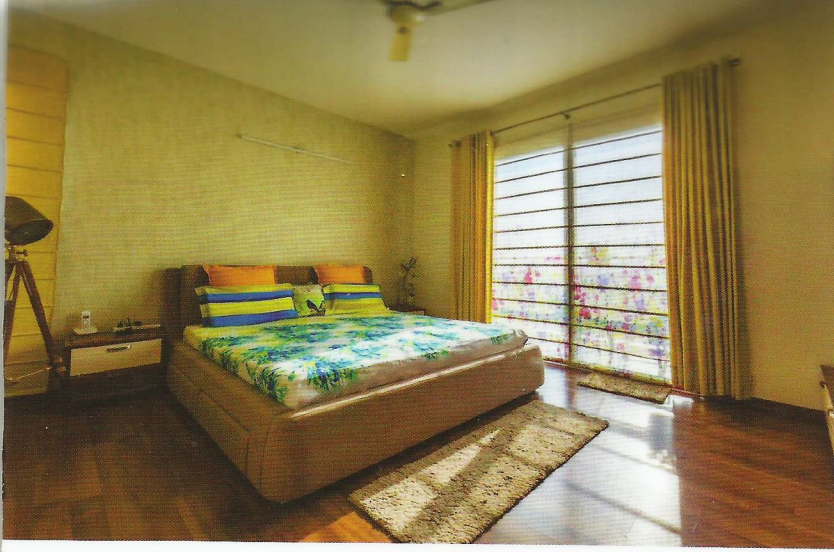
The functional pooja corner on console creating the minimalistic feel to the space.

The white lacquered glass and leatherette dining set combined with the mirror in corner giving the space modern yet opulent edge. White chesterfield sofa beautified by a paisley print runner adding a fresh pop feel to the contemporary home.

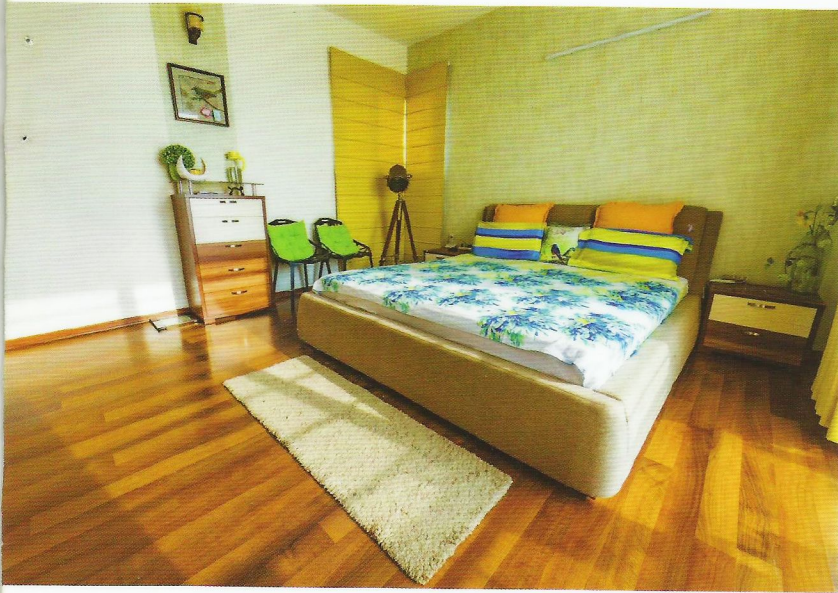


When entering into the house, right opposite to the entrance door there's a chesterfield white sofa styled with paisley print runner giving the white and beige living space a pop of fresh look to it. The drawing area has its own essence; here we experimented with eclectic colours like tints and tones of blue and the balancing it out with the whites, greys and beige in the living space instead of painting whole space into bright colours. Looking parallel to the drawing area, is the dining area with white colour lacquered glass top dining table with corresponding colour leatherette and SS chrome finish dining chairs.

And to give a little more dimensions to the dining space, a mirror has been installed in the corner of the room giving a very opulent yet subtle look to it. The apartment's two bedrooms are designed diversely, to meet the aesthetic specifications of the inhabitants and being functional at the same time.



Clean lines and a beige colour pallet with hint of yellow drapes making neutral yet elegant bedroom.

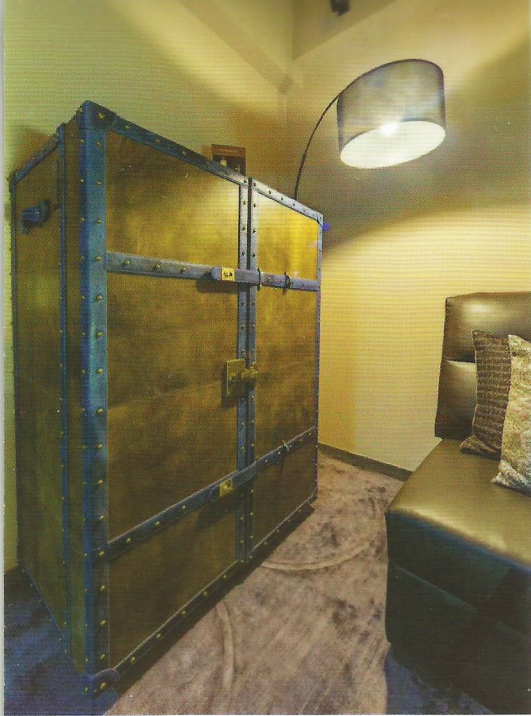


The client being highly social, here the master bedroom has been designed in a very minimalistic way that he feels calm and charged in the room. The room is clean, elegant with straight lines forming an immaculate symmetry to the sight of occupant.

The colour pallet used for this space is tones of beige with a combination of yellow drapes giving the room an overall neutral look. The kids' room on the other side is different with respect to the master bedroom. It has all the colours in the form of furnishings and upholstery and still balanced out with white walls as a backdrop to the wall art. The kids study room just as the master bedroom, is again a melange of yellows and beige colour hence making this north western corner of the apartment look brighter and warmer. Coming to the pooja space, the client liked the idea of keeping Idols on a console and giving this area a contemporary mandir look to it.



Hence, pooja corner is simple, uncomplicated yet functional. The same goes for the recreational room as well. The space has been equipped with a black sofa and rustic box furniture pieces exclusively designed to have a dark the med room for leisure activities of inhabitants.



The house looks and feels completely different from its original state, as the apartment was earlier a part of Common Wealth Game Village accommodating the participants coming in to take part in the world known multi-sports event held in Delhi. The use of warm colours and high end materials not only meets the brief, but also allows the owner to perceive the house as snugly yet statement home to the owner as well as the guests coming in.



The color pallet, textures of a rustic style recreating the modern contemporary recreational space.

### Project Team Detail

- CLIENTS NAME : Mrs & Mr. Singla
- PROJECT LOCATION : Common Wealth Games Village Society - Delhi
- SITE AREA : 3200 sq ft

# INSIDE Architecture

The Magazine Related To The Construction Industry

## api

Advance Project Information

2019

Price : 120

[info@advanceprojectmagazine.com](mailto:info@advanceprojectmagazine.com)

[www.advanceprojectmagazine.com](http://www.advanceprojectmagazine.com)

### COVER STORY

Ar.Nitin Bhardwaj

### ALSO FEATURING

Ar. Ateet Vengurlekar

Ar. Chirag Shah

Int.Des. Manisha Shah

Ar.Saurabh Chatterjee

